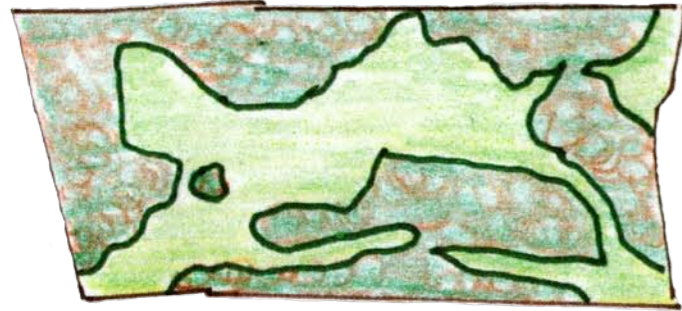


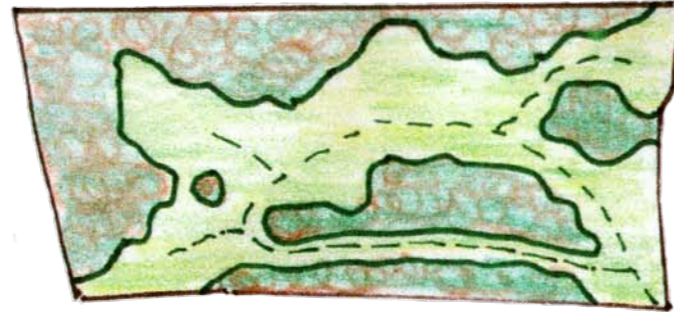
Long Lane Pasture Restoration

2004: LBB grants official access



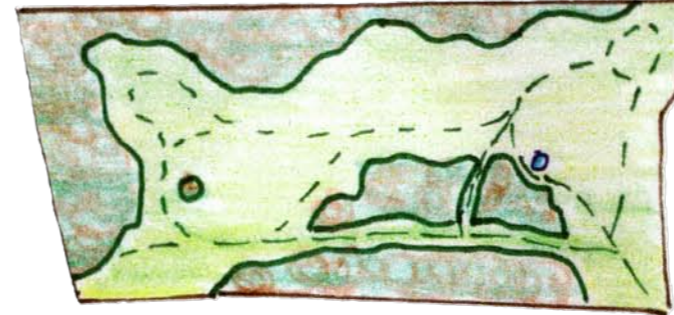
...brambles and rough grass

2005: Small volunteer groups begin



...less bramble and the first mown pathways

2006: More volunteers regularly



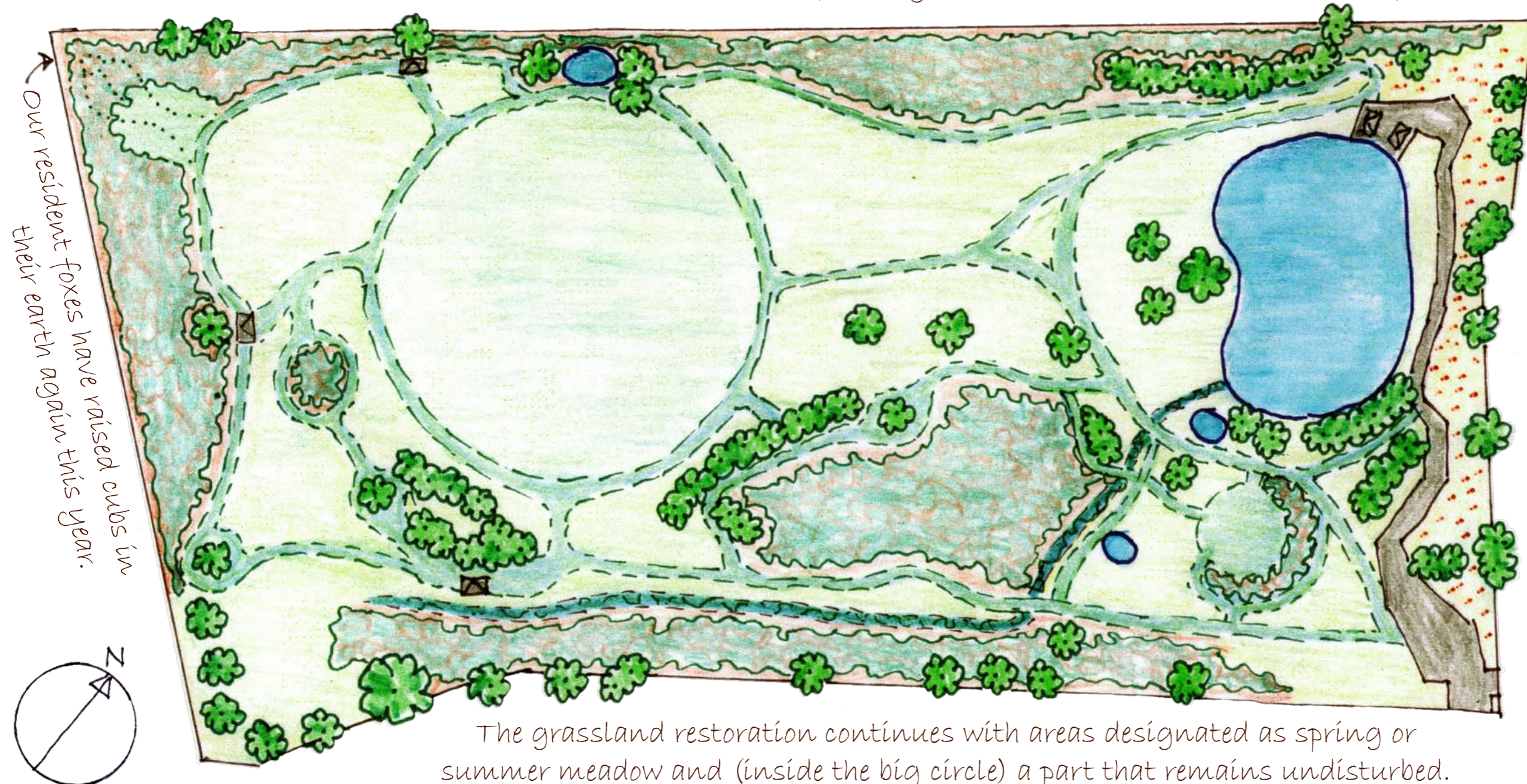
...open areas of meadow and our first small pond

2007: Wow!...grant money



...a big pond and a hard pathway for wheelchair access

2008: Bramble reduced to its (almost) final areas, mown pathways established and the results of tree planting days 2005-2007.



Our resident foxes have raised cubs in their earth again this year.



The grassland restoration continues with areas designated as spring or summer meadow and (inside the big circle) a part that remains undisturbed.

There's room for plenty more to create hedgerows and "edge of woodland" corners.

A ditch along the bottom of the embankment helps with drainage and feeds into the pond.

"Butterfly Border" has developed this year with many flowers still attracting insects in late October - and the birds have eaten all the sunflower seeds.

Some donated benches have been set out. ☑