

Birds of Prey

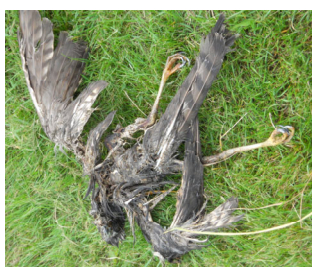


Three birds of prey have been seen over the Pasture this year. Each one has a different type of food supply.

The kestrel has been seen over the Pasture several times lately, having been absent for a few years. It is known for its hovering flight, having long narrow wings, and will swoop down on rats, mice and insects. Proof that the Pasture supports a healthy food chain!

Kestrel over the Pasture. Donald Lyven

Another bird of prey seen more often is the **sparrow hawk** which has short rounded wings and a long tail. Sadly a dead one was found recently on the Pasture. There was no obvious reason why it died. It did not appear to have been injured by a fox - it could have been poison or perhaps just old age. This bird mainly feeds on small birds, including sparrows. It was seen in the summer with a starling and has been known to catch a woodpigeon. It will fly fast and can weave in and out of the trees. It likes to fly low along one side of a hedge and then swoop over to the other side taking birds by surprise. Young birds can misjudge their dive and crash land.



The dead sparrowhawk. Jan Andersson

A bird that is spreading around London, having been introduced into the Chilterns some years ago, is the **red kite** and this feeds on carrion. It has been seen over Finchley on several occasions and flying fairly low over the Pasture. *From Derek Warren*

Thanks

A very **big thank you** to the following who have generously supported us during 2012:

Akiva School	Mary Derrett	S Mackay	Probus Club	B Vanhasesebroeck
Harriet Copperman	Glen Garage	Mrs P Marsh	Jael Reece	Denis Vigay
C & R Cooper	D Fleming	Guy Nevill	R Satherthwaite	Derek Warren
E G Cooper	Ilana Isserow	Old Barn Pre-School	W E B Soutar	Mrs Marian Werner
Justin Daniels	S D Knowles	Peter Pickering	Graham Stacy	R & C White
Empress Plumbing	S V Leith	Magrith Pike	Talbot Designs	J T Wittenburg

and to everybody who put money in our on-site collection box. Unfortunately this has been vandalised and one day's donations were stolen. We are investigating a more secure solution. Any ideas?

COMING EVENTS

December 1st

Tree Day

Saturday

10am – 12 noon

We will be planting a few new shrubs, including hazel and blackthorn to strengthen the allotments boundary. We will also be making a big effort to look after trees planted in previous years. Come along and do your bit for National Tree Week.

Please Note:

The annual mow will take place **in October** when grass and bramble re-growth will be cut back to improve the meadow flora. Volunteers are urgently needed **after that** to help with the hay raking!

Visit our website: www.longlanepasture.org