

# LONG LANE PASTURE TRUST

## ANNUAL REPORT 2006

### **Governance**

The Long Lane Pasture Trust came into being on 24 April 2006, taking over the role and assets of its predecessor, the Long Lane Pasture Action Group. This change was undertaken primarily to put in place a body to which the lease can be assigned, and it will register as a charity when the lease is in place. The Trustees are: Ann Brown (Chairman), Wayne Armsby, Frank Derrett, Dennis Pepper, and Janett Durrant. This Report covers twelve months of activities for both the Trust and the Action Group.

Day to day decisions on detailed management and activities on the Pasture are conducted through a Management Committee. Derek Warren is an additional member of this group, which meets monthly.

In order to obtain insurance and other benefits the Trust is an Associated Group of the British Trust for Conservation Volunteers, and is also a member of the Barnet Voluntary Service Council.

### **The Friends of Long Lane Pasture**

By the end of 2006 the number of Friends reached 75. There is no subscription to join, but donations are requested. A total of £923 had been received by the year-end for which we are very grateful. A Newsletter was produced in April and circulated to all Friends. 15 Friends attended a sunny Open Day at the Pasture on 3 June, and we held a Blackberry Pick on 26 August.

We are also grateful for the continued support of the following organisations: Barnet Federation of Allotments, The Octavia Hill Society, and the Finchley Society.

### **Progress on Securing the Site**

Another year has passed and it is disappointing to say that we still have no lease – this is not through want of trying! I can say however that considerable progress has been made and terms are now virtually agreed between the Trust and the Council. Our licence to access the land was renewed for a further year until May 2007. We are very hopeful of being in possession of the lease sometime this summer, but have to be wary to giving any prediction as to when precisely this might be.

We have been pleased to see building works for flats progress on the old garage site in Long Lane. This will permanently cut off potential road access to the Pasture and is another step in securing its future as a greenspace.

### **Activity on the Pasture**

A small group has worked on the Pasture every fortnight, on Saturday mornings, throughout the year, putting in a total of 272 work hours. The weather has been kind on almost every one! As a result of all this effort, large areas of bramble have been removed, and by the Long Lane gardens wall we have continued our efforts to create an area particularly attractive to butterflies. Open areas and paths have been mown throughout the spring and summer months.

Litter has been cleared on a regular basis, particularly from along the footpath fenceline and graffiti removed from the boundary wall. The footpath fence has been repaired on a number of occasions, following a continued series of break-ins to Pointalls Allotments. A small pond has been created, and has amazed us all with the wildlife it has attracted in its first year. An area for a larger pond has been cleared, marked out and a trial pit dug.



Thanks to Wayne, the seats donated by Avenue House estate are being restored and gradually put into place. In Tree Planting Week we put in blackthorn and alder buckthorn bushes, wild roses, a birch and three rowan trees.

### **Management Plan**

As pre-condition to acquiring the lease, we had to produce a Management Plan. This was duly done and takes account of feedback and ideas received at our public meetings. It has three major sections: The People Plan, The Biodiversity Plan and Implementation, and has been accepted by the Council.

### **Wildlife**

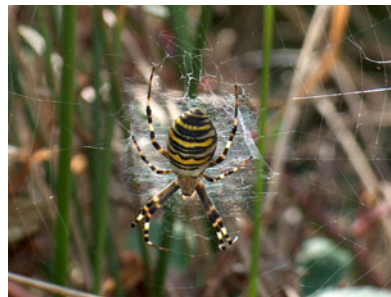
Notable bird records include 24 redwings seen on 14 January, blackcaps and whitethroats returning once again to nest (and a blackcap stayed on through the winter), and flocks of more than 200 starlings in October. A moth trap was run over three separate nights adding 16 new species to our record list. We were excited to discover a number of exotic looking wasp spiders. Field voles and foxes are regularly seen.



*Broad bodied chase dragonfly*



*Snowdrops*



*Wasp Spider*

### **Finances and Fundraising**

The Trust has sufficient funds to cover its on going expenses (see attached Financial Statement). The balance of income over expenditure at the year-end (£1,047) is being carried forward to cover anticipated costs in 2007, which may be substantial when we take on a lease for the land and start to implement the management plan. We were delighted to receive a £750 grant from the Milly Aphorp Trust. This enabled us to purchase our own mower and increase our small stock of hand tools.

### **Looking forward to 2007**

Our efforts remain focused on securing the lease. In anticipation of this we have applied for a number of large grants to undertake key projects, such as creation of the large pond and a short hard standing path. We expect the Trust to become a registered charity, which will help us to secure further resources. We very much hope to open the Pasture to the public in the course of 2007.